



## WATERSAFE IP66 FLOOR ACCESS COVERS



For all bespoke requirements, our technical team will assist you to determine the correct specification and dimensions for your project.

**+44(0)1920 463 230**

[info@howegreen.co.uk](mailto:info@howegreen.co.uk)

Galvanised and stainless steel, watersafe, IP66 rated floor access covers for internal or external applications where water ingress must be eliminated.

Howe Green's WATERSAFE IP66 range of floor access covers provides discreet, safe and easy access to underfloor services in applications where dust or water ingress must be eliminated. The standard range is available in galvanised steel or stainless steel options.

Single WATERSAFE IP66 floor access covers, to bespoke sizes or shapes can be designed and made to order in the UK by our in-house team of experts to meet each project's unique floor access requirements.

Suitable for a wide range of applications from swimming pools, wet rooms and bathrooms to parks, hospitals, dock sides and rail projects.

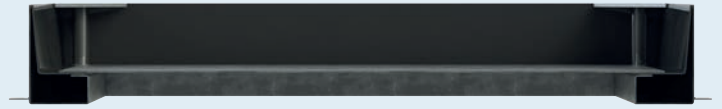
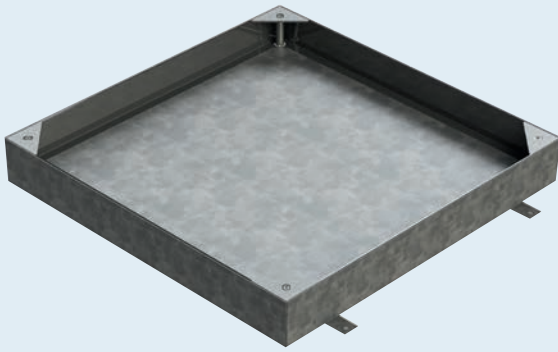
### » FEATURES

- Watersafe design with IP66 rating
- Load rating: A15 – D400 (FACTA A – D)
- Loading is achieved without structural infill
- Load rating does not affect water ingress
- Stainless steel or galvanised steel options
- Galvanised to BS EN ISO 1461
- Maximum clear opening: 1000 x 1000 mm
- Outer frame at maximum: 1200 x 1200 mm
- Standard stone or concrete depth: 100 mm
- Deeper recess available on request
- Easy stone, tile or slab installation
- Triangular corner plates with standard barrel lifting points
- 15mm speed pipe connector to remove any water droplets



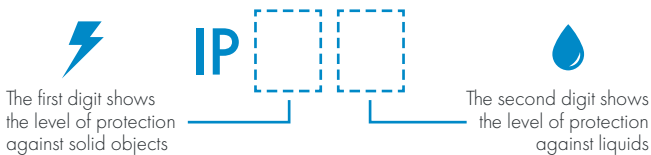
# WATERSAFE IP66 FLOOR ACCESS COVERS

» FOR INTERNAL & EXTERNAL APPLICATIONS



## » IP66 RATING

IP stands for Ingress Protection and is formed with two numbers: **IPXX**. The two numbers refer to two separate levels of protection.



<b>0</b>	No protection against contact and ingress	<b>0</b>	No protection
<b>1</b>	Protected from solid objects bigger than 50 mm dia. (hands/large tools)	<b>1</b>	Protected against vertically falling water drops
<b>2</b>	Protected from solid objects no bigger than 12.5 mm dia. (hands/large tools)	<b>2</b>	Protected against vertically falling water drops when at a 15° angle
<b>3</b>	Protected from solid objects bigger than 2.5 mm dia. (small tools/wires)	<b>3</b>	Protected from water spraying up to 60° on either side
<b>4</b>	Protected from solid objects bigger than 1.0mm dia. (wires)	<b>4</b>	Protected from water spraying at any angle
<b>5</b>	Sufficient protection from entry of dust that could interfere with equipment	<b>5</b>	Protected against water jets from any direction (hose pipes)
<b>6</b>	Complete dust protection (no ingress of dust)	<b>6</b>	Protected against powerful water jets or heavy seas
		<b>7</b>	Protected against continuous submersion in water under defined conditions of pressure and time
		<b>8</b>	Protected from solid objects no bigger than 12.5 mm dia. (hands/large tools)

## » MINIMUM & MAXIMUM SIZES

- Maximum clear opening: 1000 x 1000 mm
- Outer frame at maximum: 1200 x 1200 mm
- Outer frame is clear opening + 200 mm

## » OPTIONS

- Higher FACTA ratings can be manufactured on request
- Aluminium covers can be supplied for applications in sea salt environments
- Bespoke sizes or shapes can be designed and made to order
- Infill depth manufactured to meet project requirements, minimum 70 mm



Embassy Gardens.

## » CONTACT US

### Sales Enquiries

+44(0)1920 463 230 [info@howegreen.co.uk](mailto:info@howegreen.co.uk) [www.howegreen.com](http://www.howegreen.com)

Marsh Lane, Ware, Hertfordshire, SG12 9QQ, UK



Follow us on:    



FS 712015 EMS 724804

Howe Green is part of the Access 360 division of Tyman UK and Ireland

SAFE ACCESS ALL AREAS