

Visedge® and 7500 Series Floor Access Hatches for Chase Farm Hospital



Hospitals



Chase Farm Hospital Enfield, the newest and most digitally advanced hospital in the NHS estate

Sector
Hospitals

Project
Chase Farm, Enfield

Architect
IBI Group

Flooring Contractor
Galldris Group

Howe Green Specification
Visedge® Series flexible floor access covers

7500 Series medium-duty aluminium floor access covers

Howe Green Ltd, a leading UK manufacturer of floor access covers, has supplied nearly 70 covers to Chase Farm Hospital in Enfield. The £200 million redeveloped hospital became fully operational last autumn. It is the newest and most digitally advanced hospital in the NHS estate.

Chase Farm offers patients a range of services including an out-patient department, an urgent care centre, an older person's assessment unit, an endoscopy unit, a chemotherapy day unit, eight operating theatres, a dedicated day surgery area and 50 surgical in-patient beds.

Howe Green's Visedge Series Flexible Floor Access Covers and 7500 Series Medium-Duty Aluminium Floor Access Covers were specified for the project by international architects IBI Group.

The covers were supplied to established, Enfield based contractor, Galldris. Technicians from Galldris installed the Howe Green access covers throughout the 20,000 square metres of internal flooring, including the plant room and endoscopy unit. The Visedge covers were infilled with vinyl flooring. The floor finish for the 7500 Series varied depending upon the location of the cover.

The Howe Green access covers enable safe and easy access to building services concealed under the flooring of the hospital. The covers can be removed, safely and easily, for maintenance purposes with the use of lifting keys.

The Visedge Series provide a durable, lightweight, non-rusting access solution for flexible sheet flooring systems in environments with pedestrian footfall, wheeled trolleys and sack trucks. Double sealed, the Visedge covers are ideal for a busy hospital where the highest standards of hygiene and security are required.

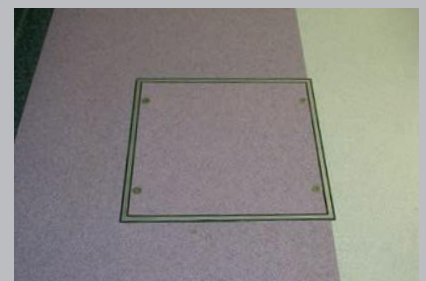
7500 Series Medium-Duty Aluminium Floor Access Covers are used for all types of hard floor finish, including ceramic tiles, terrazzo and wood. They offer a heavier loading than the Visedge, with a 5 tonne pneumatic tyre wheel load suitable for cars and light delivery vehicles.

The Visedge and 7500 Series are available as a single cover, a duct run or as a multipart unit. Standard sizes are available from stock and bespoke sizes can be manufactured to order with no time or cost constraint.

Howe Green has supplied many hospitals over the last 35 years including Southmead Hospital in Bristol and Queen's Hospital in Romford.



The floor finish for the 7500 Series can be matched to the location of the access cover



Visedge® floor access covers for use with flexible vinyl floor coverings



Visedge® covers are ideal for a busy hospital where the highest standards of hygiene and security are required

Howe Green Ltd.
Marsh Lane, Ware
Hertfordshire SG12 9QQ
Tel: 01920 463230
Email: info@howegreen.co.uk
www.howegreen.com