

Ricoh Arena, Coventry



Access Covers

At £113 million, Coventry City Football Club's award winning Ricoh Arena is central to the city council's long term plan to rejuvenate the local area. Within its first year, it attracted more than 1 million visitors.

Built by Laing O'Rourke, and officially opened in 2005, Ricoh Arena is set within more than 40 acres of land and is unlike any other development of its kind in the UK.

With state-of-the-art conference, banqueting, hotel, exhibition and sports facilities, the multi-purpose complex has already won a clutch of awards, including Best UK Venue 2006 by the International Confex Awards and Best New Venture at the Godiva Awards.

To work at optimum capacity, Ricoh Arena required a floor access solution to reach under floor services carrying water, drainage, electricity and data to internal and external leisure amenities. In particular, staff need to carry out regular checks on under soil heating, sprinkler systems and floodlighting. Howe Green's 7500 series covers were the natural choice.

Project:

Ricoh Arena

Product:

7500 series floor access covers

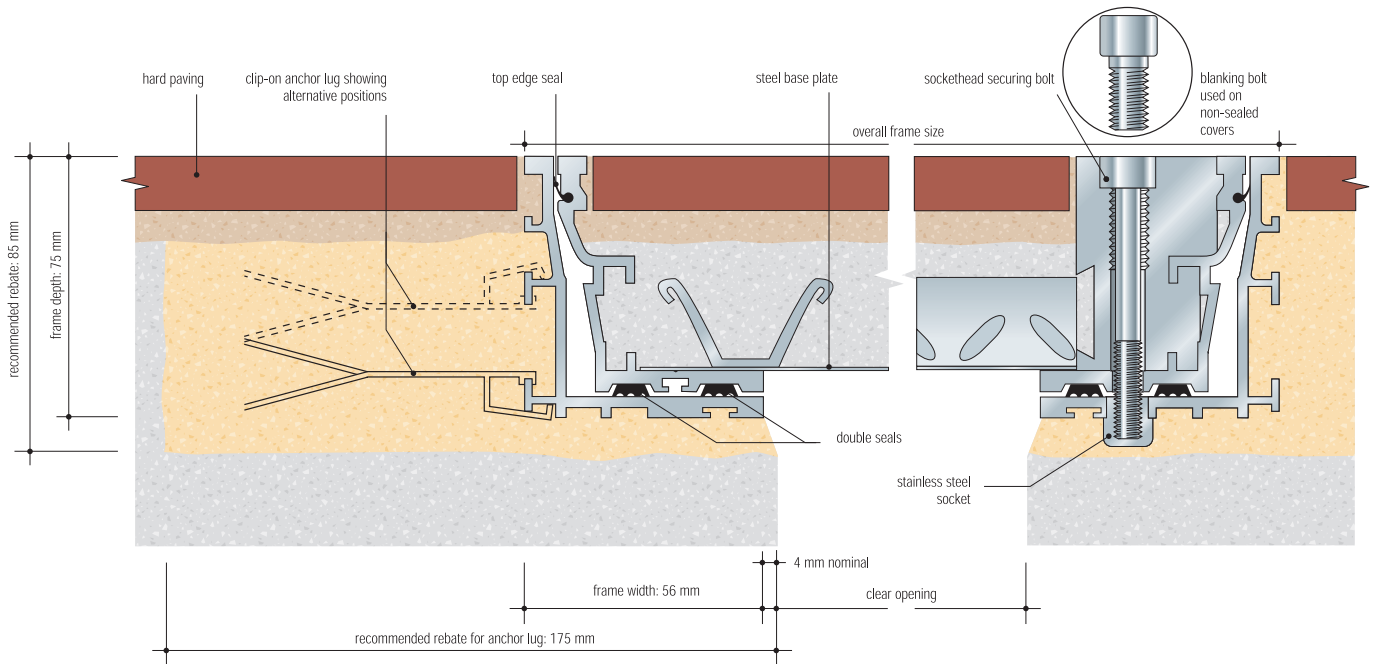
Architect:

Miller Partnership



7500 Series Floor Access Covers

Cross section showing anchor lugs and locking/lifting detail (scale 1:2)

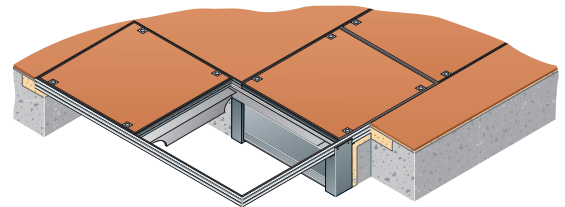


Performance

Aesthetically pleasing, Howe Green's 7500 series covers have slim-line aluminium showedges that blend effortlessly with floor coverings. They are precision made to sit perfectly flush with their surround and prevent distortion – perfect for avoiding slips or trips.

Heavy duty and tamper-resistant, the double-sealed covers are tapered for easy removal. Each panel is designed to cope with up to a 5 tonne pneumatic wheel load whilst providing quick, easy and safe access to key services.

All covers are made to measure. This means sizes that may be thought 'non-standard' can be manufactured at no extra cost. The versatile nature of the Howe Green system also allows any configuration of ducts and branches to be created.



Installation

Using Howe Green's patented system, the covers were manufactured to a range of different sizes and dimensions at no extra cost. Fitted quickly and unobtrusively with the Terrazzo flooring used throughout the stadium complex, the covers are double-sealed to meet the highest standards of hygiene and security. They are also immensely durable, while being corrosion and maintenance-free.

As a result, essential 'behind the scenes' operations at Coventry City Football Club's impressive stadium now run as smoothly as the players on the pitch.

Howe Green Limited
Marsh Lane, Ware,
Hertfordshire SG12 9QQ

Tel: +44 (0) 1920 463230
Fax: +44 (0) 1920 463231
Email: info@howegreen.co.uk
Web: www.howegreen.co.uk