

Queens Hospital, Romford, Essex



Access Covers

Over 200 Visedge floor panels were supplied by Howe Green for Romford's new state-of-the-art 939-bed Queen's Hospital, to provide easy – yet tamper-proof – access to vital underfloor services.

Designed by architects Jonathan Bailey Associates, Queen's Hospital was built for Barking Havering & Redbridge Hospitals NHS Trust. Serving a population of around 700,000, the £261 million four-storey, 4,500 room building provides high quality specialist acute services.

With the hospital floors set to be subject to heavy foot traffic from millions of annual visitors, patients and medical staff, a heavy duty and tamper-resistant access solution was required. Such floor panels enable essential access to concealed pipes and cables, as well as vital building services including IT, heating and water supply.

Due to their public-facing location, it was also essential that the covers fit perfectly flush with their surround to avoid distortion and prevent any slips or trips occurring for people using the facilities.

Howe Green's Visedge covers, suitable for a wide range of demanding environments, offered the most cost-effective and low maintenance solution. Fitted quickly and unobtrusively, the covers are double-sealed to meet the highest standards of hygiene and security and are corrosion and maintenance-free.

The hospital's construction was funded by Catalyst Healthcare, a Private Finance Initiative consortium comprising Bovis Lend Lease, the Bank of Scotland and Sodexo. Catalyst will now manage the day-to-day upkeep and long term maintenance for a concession period of 36 years.

With Howe Green's robust and maintenance-free Visedge covers installed throughout the building, Catalyst can be reassured that underfloor services will remain safely concealed for the duration.

Project:

Queens Hospital, Essex

Product:

Visedge floor covers

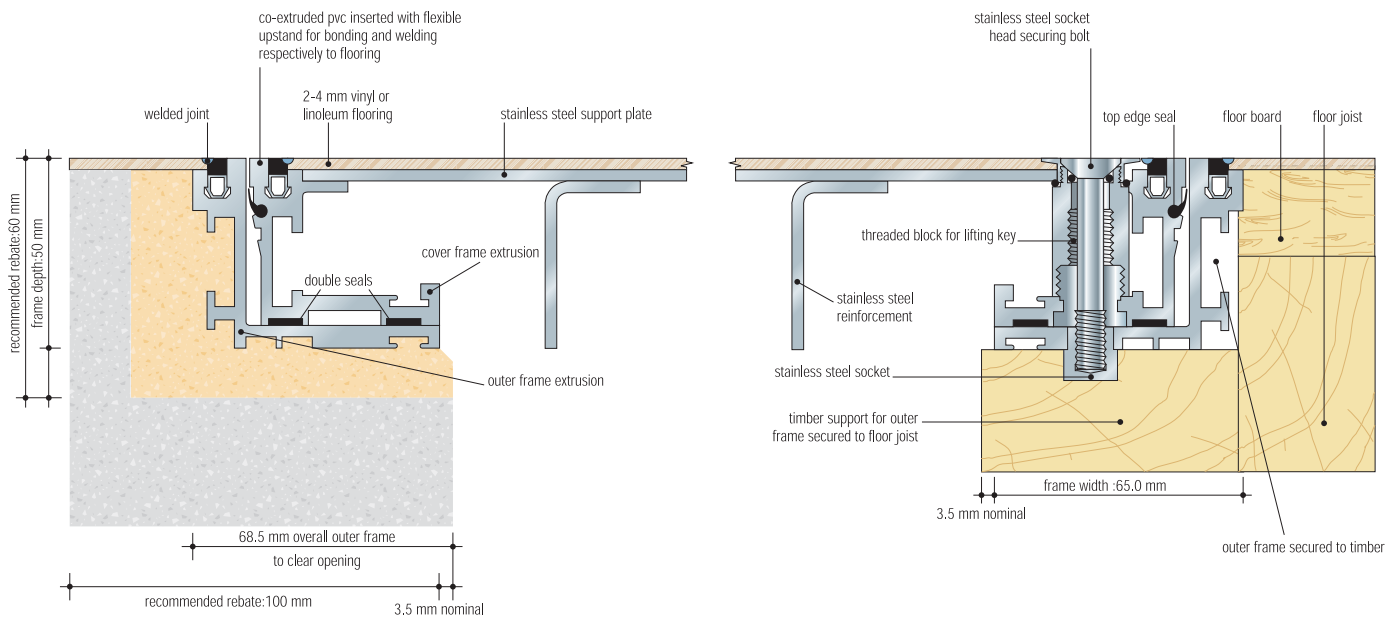
Architect:

Johnathan Bailey Associates



Visedge Floor Access Covers

Cross section showing concrete and timber sub-floors (Scale 1:2)



Performance

The Visedge series combines modern construction techniques with innovative design. Engineered for use with flexible sheet flooring systems, the covers provide 'stiletto-proof' resistance and have proven longevity in highly trafficked areas.

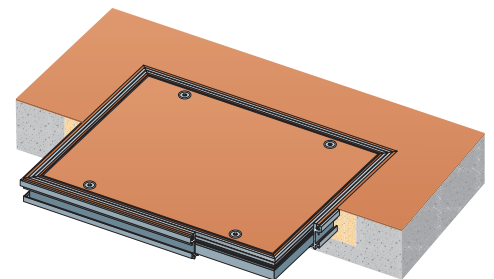
The covers can be custom made to suit any aperture at no cost premium. Featuring a double seal designed to create a positive seal to drainage, electrical and other ducts, they are also fitted with a top edge dirt seal. The covers also have crimped corners to allow both the cover and frame to lie completely flat.

The Visedge panel is designed for use with all flexible flooring coverings including vinyl, linoleum and some carpets. It is suitable for pedestrian traffic (including wheeled trolleys, sack trucks etc.) making it the ideal floor panel for commercial environments such as hospitals

Unlike similar products, the Visedge series also allows the sheet flooring to be both bonded down and hot welded to the perimeter of both the cover and frame. This creates a permanent joint and eliminates any possible water ingress and peeling which can cause a health and safety hazard.

Installation

The Visedge panels were fitted in conjunction with the hospitals flexible floor covering, with the top edge dirt seal and weldable pvc securing edge ensuring the floor material fitted flush with the panel. This eliminates any possible water or dirt ingress and trip hazard.



Howe Green Limited
Marsh Lane, Ware,
Hertfordshire SG12 9QQ

Tel: + 44 (0) 1920 463230
Fax: + 44 (0) 1920 463231
Email: info@howegreen.co.uk
Web: www.howegreen.co.uk