

Lee Valley Athletics Centre, Enfield



Access Covers

Located in Enfield, North London, the £16 million Lee Valley Athletics Centre is a major new training venue for the capital and the South East.

The facility is the largest indoor and outdoor athletics centre in the region, housing an indoor 200 metre track, a 130 metre sprint straight, seating for 500 spectators, plus full jumps and throws capacity. In addition, the centre houses physiotherapy and strength and conditioning rooms.

Designed by David Morley Architects, the centre makes the maximum use of natural light and ventilation – saving energy and creating the optimum training environment for athletes.

Howe Green's 7500 series aluminium access covers were chosen to provide safe and unobtrusive access to essential floor based building services located throughout the complex.

Project:

Lee Valley Athletes Centre, Enfield

Product:

7500 series floor access covers

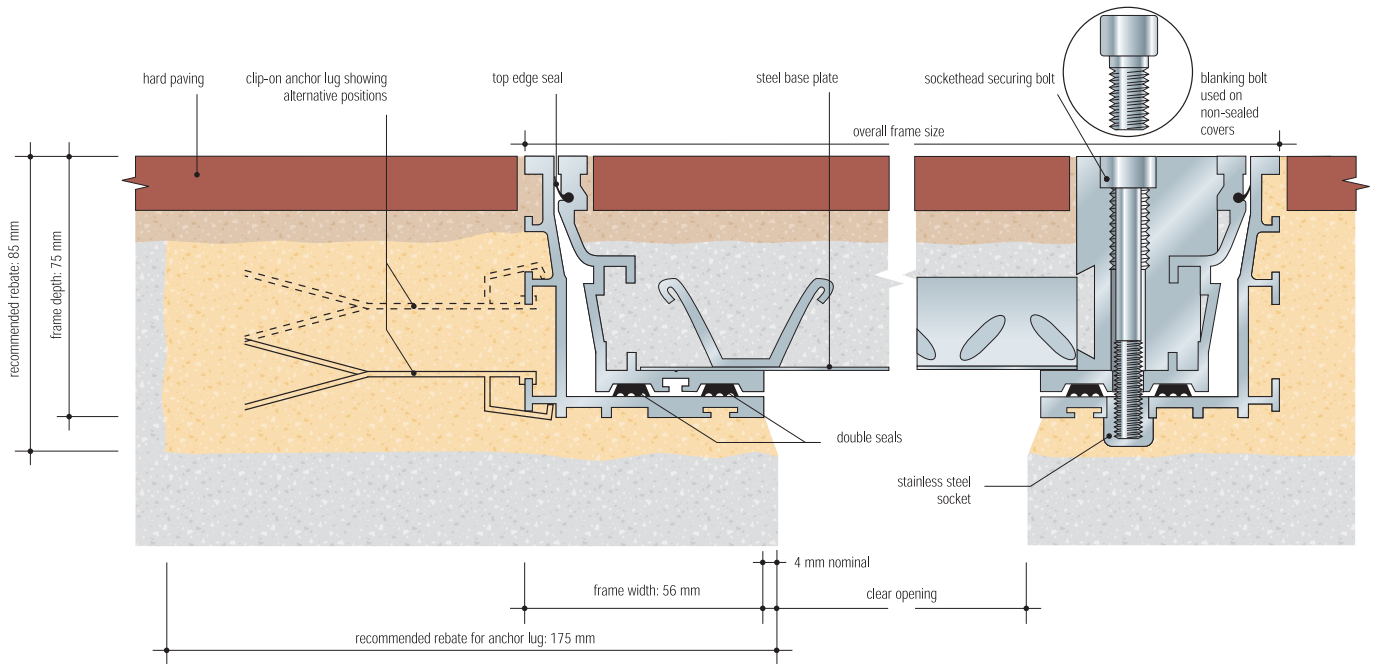
Architect:

David Morley Architects



7500 Series Floor Access Covers

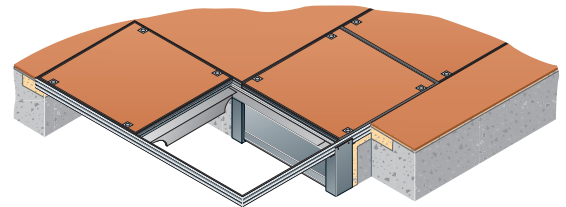
Cross section showing anchor lugs and locking/lifting detail (scale 1:2)



Performance

Purpose designed for a variety of different floor finishes, the heavy duty and tamper-resistant covers have the capability to cope with up to a 5 tonne pneumatic wheel load.

Sitting flush with the floor to prevent any trips, they provide quick, easy and safe access to the concealed services underneath. The panels are double-sealed to meet the highest standards of hygiene and security, while staying corrosion and maintenance-free. With slim-line aluminium show edges providing a modern, yet unobtrusive design, Howe Green's 7500 series access covers were the perfect solution for the new centre.



Installation

Each panel was individually manufactured by Howe Green to the exact requirements of both the flooring and building services contractors. Using the latest manufacturing techniques, Howe Green offers specifiers and contractors individually produced panels without the high costs normally associated with bespoke products.

The versatile nature of the Howe Green system also allows any configuration of ducts and branches to be created. In addition, panels can also be easily adapted to suit the needs of the building. For example, the Lee Valley Athletics Centre features a number of the access covers fitted with power sockets.

Howe Green Limited
Marsh Lane, Ware,
Hertfordshire SG12 9QQ

Tel: +44 (0) 1920 463230
Fax: +44 (0) 1920 463231
Email: info@howegreen.co.uk
Web: www.howegreen.co.uk